

Research on steel structure connections design and analysis review

Mohammad Zekria

Assistant Professor, Department of Civil Engineering, Nangarhar University, Daronta, Nangarhar Province, Afghanistan

Abstract

Connections are an essential part of the steel structure and their debugging is critical to achieve safe and economical structure. Thus, making of a way for solution of providing ability to structural loads in the beam and through the connections. In this paper a brief information will be explain, types of connections typically utilized in design practice are portrayed: angle connections, end plate connections and welded connections. In traditional analysis and design of steel confined structures joints are generally completed under the presumption that they are either undeniably pinned or completely rigid. However, experimental research shows that most connections utilized in momentum practice are semi-rigid sort and their conduct lies between these two admired circumstances. Structural analysis models permit the joint portrayal with semi-rigid conduct. Eurocode 3 sets up three new classifications of joints, concurring with both solidness and quality rules, required in structural modeling, (ASRO, 2006; CEMSIG, 2010) namely: continuous, semi-continuous and simple joints. There are additionally introduced the conceivable outcomes of modeling joints relying upon the technique for analysis.

Keywords: connections, steel structures, analysis, joints, design

1. Introduction

In recent years, there is an inclination to relinquish the glorified approximations and to address an impression of the genuine auxiliary behavior. The inquiry is of a serious nonlinear examination (Chiorean, 2009), in which the noteworthy impacts that attempt the behavior of the structure must be caught appropriately. Behavior of steel structures can be constrained by the exemplification of the connections between their components: radiates, sections, propping. Connections are a key aspect of a steel structure and completing them appropriately is conclusive to accomplish a sheltered and economical structure. There are numerous conceivable association designs, however without a doubt, not many have been tried tentatively. Indeed, even among the individuals who were tried, changes in load bearings, calculation, material types or supports, lead to the development of new setups to those subject to exploratory tests. Along these lines, setting up an answer requires information on basic mechanics, capacity to follow the progression of burden in the shaft and through the association, experience and objective examination of the design engineer. Monetary contemplations assume a job, as well. On the off chance that you are permitted to utilize bolts or welding, creation or erection value assumes a significant part in picking the sort of association.

In regular analysis and design of steel surrounded structures, joints are generally done under the suspicion that they are either unmistakably pinned or completely rigid. The rigid joint expect that general revolution of associated components isn't permitted, and the twisting second from the finish of the shaft is completely sent to the section. The pinned joint permits free pivot of the associated components and the twisting second from the finish of the shaft is consistently zero. Notwithstanding, experimental examination shows that most connections utilized in current practice are semi-rigid sort and their conduct lies between these two glorified circumstances.

In contemplating the connection conduct, transmission capacity of endeavors from the beam to the column is fundamental, considering the outside loadings of the structure and the arrangement picked to accomplish the connection. Accordingly, hubs can send axial load, shear and/or twisting second, or just one of these solicitations, or a blend thereof, either at the same time, where case it is guaranteed practically ideal progression between elements. The impact of axial force and shear force is unimportant since their disfigurements are little contrasted and the rotational distortion of connections.

2. Types of connections

In writings there are numerous characterizations of connections, as indicated by different rules and generally similar classifications of connections are talked about. Steel structures are made for the most part of I or H shapes. In interfacing these elements are normally utilized a couple of specialized arrangements: edge connections, end plate connections and welded connections.

2.1 Edge connections

Edge connections are flexible on the grounds that you can get an assortment of arrangements of such connections. Accordingly, by changing the size of points, their length or thickness, the size of jolts or welds, openings or the kind of material utilized, the ideal connection execution is gotten. Edge connections are utilized essentially in the beam to column joints. There are numerous types of point connections: single web edge, twofold web edge, spine edge, joined rib and web edges, top and seat edges, Figure 1, Figure 2 and Figure 3, (Chen, 1994; Chen *et al.* 2006; Balc, 2012).

Single web point connection is the most adaptable mix of basic connections. It is fit to oppose gravity shear loads and has a decreased capacity to send the bowing second, so it is delegated a pinned connection. It has a little protection from

twist, so it isn't appropriate for this activity; it isn't reasonable additionally for any application where axial pressure because of the critical adaptability of this connection exists. This sort of connection is efficient regarding produce and has the benefit of a straightforward and safe erection.

Double web point connection is reasonable for moving shear come about because of gravity loads and it likewise has an ideal reaction to twist as long as the connection size is at any rate half of the T separation (AISC, 1994; AISC, 2002). The firmness and the second opposition of this connection are double compared with the basic edge connection.

Spine point connection is accomplished by welding or bolting the edges of the beam rib and the column rib. The issue of bolts sliding in the openings is dispensed with by picking welded points and the connection firmness is expanded as against bolting arrangement.

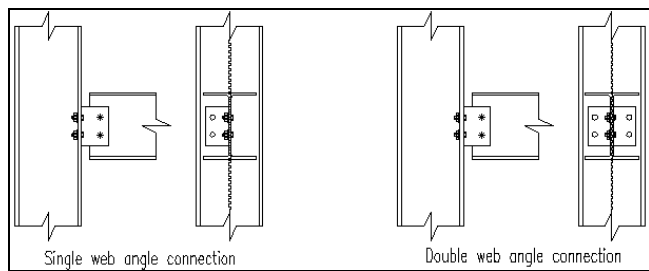


Fig 1: Single and double web edge connections (Balc, 2012)

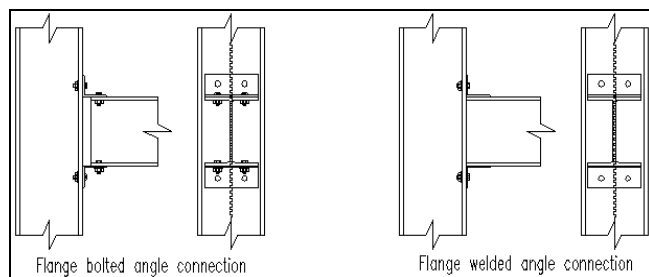


Fig 2: bolted and welded edge connections (Balc, 2012)

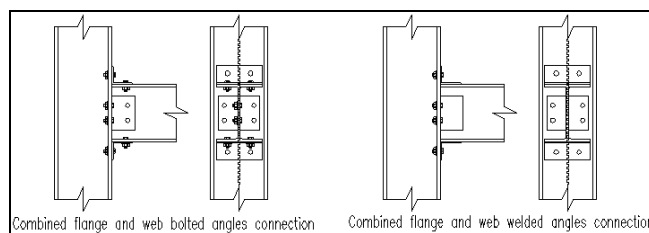


Fig 3: Consolidated rib and web bolted and welded edge connections (Balc, 2012)

2.2 End plate connections

The end plate connection comprises of a steel plate welded to the furthest limit of the beam, along both the spines and web, and bolted to the column rib utilizing preloaded high quality bolts. This sort of connection can be flush end plate connection, Figure 4 and Figure 6a, with plate length equivalent to the tallness of the beam, or expanded end plate connection, Figure 5, whose length surpasses the stature of the beam, by expansion on the pressure side just, Figure 6b,

When static loads are applied, or both on the strain and pressure sides, Figure 6c, while substituting cyclic load is applied (Chen and Toma, 1994; Balc, 2012). The two types of connections may have extra stiffeners to diminish the adaptability of the end plate and to change the qualities of solidarity and firmness. Likewise, the stiffeners may happen on the column rib to forestall its flexural disfigurement.

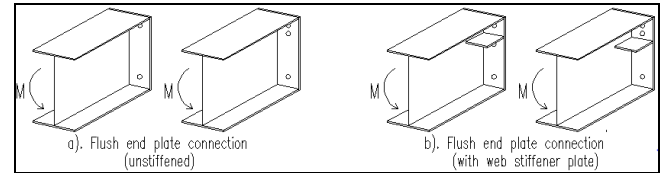


Fig 4: Flush end plate connections (AISC, 2002)

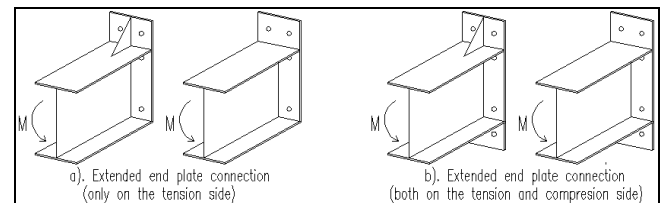


Fig 5: Extended end plate connections (AISC, 2002)

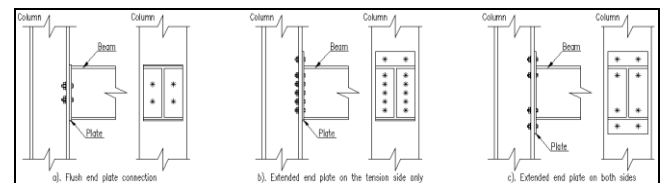


Fig 6: End plate connections (Chen and Toma, 1994)

2.3 Welded connections

Welding is utilized basically in steel workshops, where there is particular equipment and the supervision and control of the methodology can be completed effectively, guaranteeing the getting of good weld quality. Welding flexibility gives the design engineer more opportunity than some other methods for connection. Then again, a welded connection can be handily hurt by botches in design (decision of connection type, sort of welding, the weld size or the necessary opposition), execution mistakes (troublesome access, one side welding versus different sides welding, the external layer of weld, the edge readiness before welding) or erection.

Associating steel elements by welding, it results a joint with a serious extent of solidarity and rigidity. A rigid connection can be accomplished if the weld is appropriately completed, the main adaptable component remained being the web board of the column. Latches can be utilized, contingent upon the idea of the loading. In figure underneath there are represented the primary arrangements of welded connections, with or without stiffeners, Figure 7 (ASRO, 2006; Balc, 2012).

As a result of high solidness of these connections the structure disappointment mode is unexpected, with no notice, by fragile crack. To kill this burden, there are a couple of specialized arrangements (Mazzolani and Piluso, 1996; CEMSIG, 2010; Balc, 2012) by empowering development of plastic pivots in the beam and not in connection.

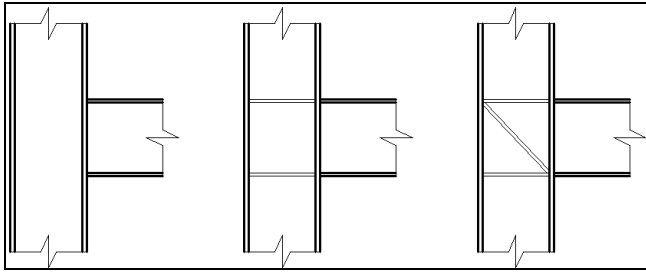


Fig 7: Welded connections (Balc, 2012)

3. Formulation of the Generalized Joint Element

3.1 Interior Joints

Fig. 8 shows a mechanical model of an inside connection with rigid connections and springs. The springs K_1 and K_2 shows the connection firmness at each side of the joint originating from the segments, for example, column web in pressure, column right spine in twisting, end-plate in bowing, points, bolts in strain and reinforcement on account of composite structures. The springs K_{cws} and K_{cwc} speak to the general firmness of the board zone under shear and pressure, individually. These are generally the most basic segments of the joint. This model might be presented as is in a worldwide analysis as referenced previously, be that as it may, this adds multifaceted nature to the designer and conceivable mathematical adjust blunders in the worldwide structural analysis.

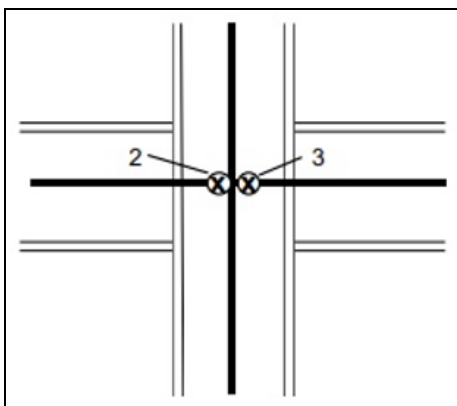


Fig 8: Zero-length two-spring joint model

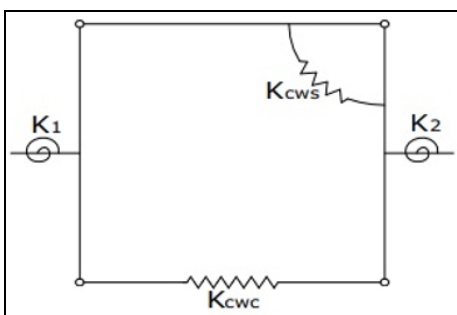


Fig 9: Mechanical model of a joint

As an option a summed up component is proposed (see Fig. 10) with 4 hubs and 12 degrees of opportunity (d.o.f.) for the planar case. The base component appeared in Fig. 11 will be utilized to get the fundamental adaptability and solidness grids. The measurement d is equivalent to the width of the column, and the tallness h relates to the switch arm. A short time later, the commitment of the rigid body

modes can be added to get the total solidness lattice regarding the 12 d.o.f. as appeared in Fig. 10.

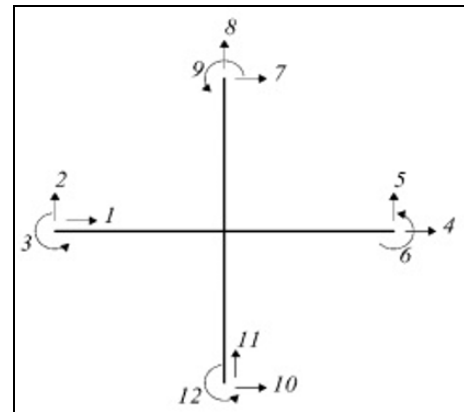


Fig 10: Proposed joint model (12 d.o.f)

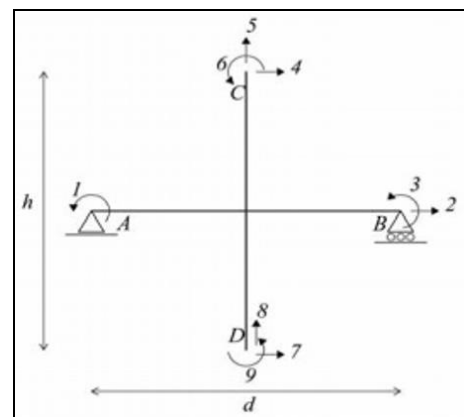


Fig 11: Base joint element (9 d.o.f)

3.2 External Joints

The external and corner joints will just have 9 and 6 degrees of opportunity, separately, as appeared in Figs. 12 and 13. Their firmness grids might be gotten from the 12 d.o.f. firmness grid of the inside joint, K , by methods for the static buildup calculation that aides disposing of those degrees of opportunity that are a bit much.

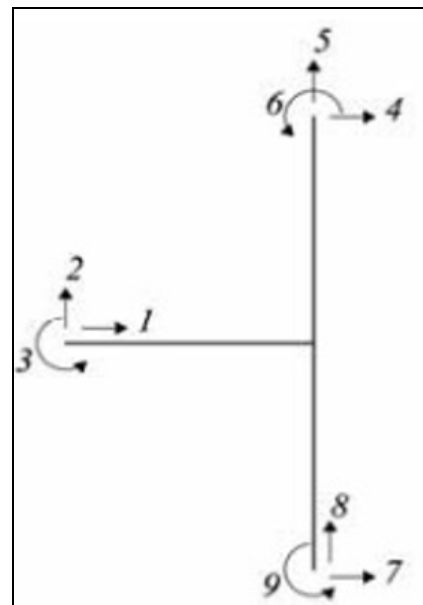


Fig 12: Exterior element

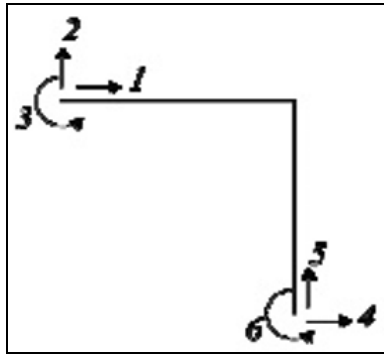


Fig 13: Corner element

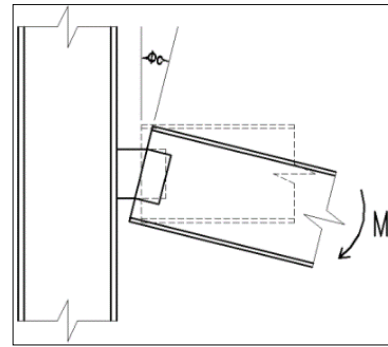


Fig 14: Rotational deformation of a connection (Chen, 2000; Balc, 2012)

4. Modeling of Connection

In conventional designing act of steel system structures, beam-column connections are considered as either completely rigid or unmistakably pinned, however experimental examinations have indicated that they have a halfway conduct between the two extraordinary cases that is a semi-rigid conduct.

The figure underneath shows the general pivot between the beam and the column, Φ_c , when a twisting second, M , is applied on the beam-to-column connection, Figure 14 (Chen, 2000; Balc, 2012). Thus, the connection conduct is represented by the $M-\Phi_c$ connection, which is the most significant information for analysis and design of semi-rigid steel surrounded structures.

The schematic second revolution conduct of most ordinarily utilized semi-rigid connections is appeared in the figure underneath, Figure 9 (Chen, 2000; Balc, 2012).

It might be seen that all second revolution bends are nonlinear and the T-stub connection is nearest to a rigid connection, while the web edge type speaks to an entirely adaptable connection.

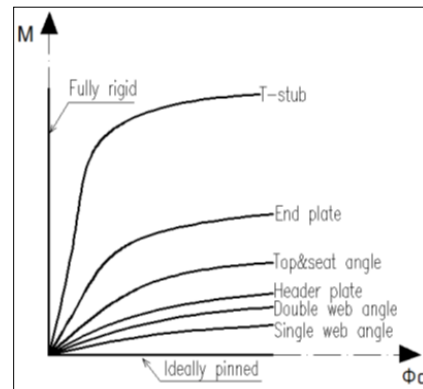


Fig 15: Moment rotation curves (Chen, 2000; Balc, 2012)

5. Methods of analysis

The European code orders connections of steel structures as per the solidness and quality models (ASRO, 2006; CEMSIG, 2012).

Eurocode 3 sets up three new types of joints, agreeing with both solidness and quality measures, required in structural modeling (ASRO, 2006; CEMSIG, 2012), to be specific: persistent, semi-constant and basic joints, Table 1.

Table 1: Connections modelling types, (CEMSIG, 2010)

Strength			
Stiffness	Total Strength	Partial Strength	Nominally Pinned
Rigid	Continuous	Semi- Continuous	-
Semi-Rigid	Semi- Continuous	Semi- Continuous	-
Nominally Pinned	-	-	-

Continuous joint idea is reasonable just for complete quality and rigid connections, whose conduct doesn't influence the structural analysis. For ostensibly pinned connections regarding both grouping rules (quality and firmness) straightforward joint idea is appropriate. The basic joint isn't able to communicate twisting second and shear force can

just accept. Semi-continuous joint is reasonable for the remainder of mixes: rigid/fractional quality, semi-rigid/complete quality and semi-rigid/halfway quality and its conduct impacts the analysis of the structure through its rigidity (CEMSIG,

Table 2: Joints modelling and types of analyses, (CEMSIG, 2010)

Connection modeling type	Analysis type		
	Elastic Analysis	Rigid-Plastic Analysis	Elastic-Perfect Plastic or Elasto-Plastic
Continuous Semi-Continuous Simple	Rigid Semi-Rigid Nominally Pinned	Total Strength Partial Strength Nominally Pinned	Rigid / Total Strength Rigid/Partial Strength Semi-rigid/Total Strength Semi-Rigid/Partial Strength Nominally Pinned

In the table above, Table 2, there are potential outcomes of joints modeling arranged by the strategy for analysis

performed (CEMSIG, 2010). Structural analysis models permit semi-rigid connection

portrayal by a rotational spring situated between the finishes of the associated individuals, for instance between the finish of the beam and column (ASRO, 2006; CEMSIG, 2010). In a direct versatile analysis for connection modeling, the trademark bend of second pivot reaction is related to this spring. In the event that the rotational firmness of the connection is zero, the joint is pinned, if the rotational solidness is vast, the joint is rigid, and if rotational firmness is between the two extraordinary cases the joint is semi-rigid (CEMSIG, 2012).

Techniques for connections analysis are flexible, rigid-plastic and versatile plastic analysis (ASRO, 2006; CEMSIG, 2012).

Flexible analysis expects connections to be grouped uniquely as per their solidness on the grounds that their quality isn't influenced since the segments and web board yielding are not reached. Rotational solidness, S_j , relating to the bowing second from flexible analysis, M_j , Ed, is utilized to compute the semi-rigid connections. On the off chance that M_j , Ed is not exactly or equivalent to $2/3 M_j$, Rd, and M_j , Rd is the twisting second opposition, in the analysis is viewed as the whole estimation of the connection solidness, S_j , ini, in any case a firmness debasement happens and it is considered through a solidness coefficient, η , which is given in design codes (ASRO, 2006; CEMSIG, 2012).

Rigid-plastic analysis expects connections to be ordered uniquely as per their quality and their solidness is viewed as endless. To compute the twisting second opposition, M_j , Rd, European standard gives recipes and gives to guarantee the necessary pliability for conveying the subsequent pivots from structural analysis (ASRO, 2006; CEMSIG, 2012).

On the off chance that a versatile plastic analysis is performed, it is important to arrange connections as per firmness rules (to characterize the flexible qualities) and quality standards (to characterize the request for plastic pivots event), (ASRO, 2006; CEMSIG, 2012). In deciding the inner forces of the structural elements, the full second revolution bend ought to be utilized and firmness coefficients, η , continue as before as in the flexible analysis.

6. Conclusions

Genuine conduct of the structure overall relies upon the attributes and conduct of connections. It was shown that all connections have a specific measure of turn and build up a bowing second, well a semi-rigid conduct. The semi-rigid joints add to the definition and execution of steel structures equipped for meeting the exhibition models forced by seismic design guidelines. Worldwide seismic execution of steel outline structures is unequivocally impacted by the mechanical properties of beam-column connections, thusly semi-rigidity ought to be thought of and treated as a compelling method to accomplish this presentation (Mazzolani and Piluso, 1996; Alexa and Moldovan, 2005).

A key part of the proposed approach is that the joint is dealt with autonomously of the remainder of the elements in a structure. Thusly, the conduct of a connection isn't included, as customarily done, to the furthest limit of a beam yet rather the connections, left and right, and the web board are totally treated together and consistently in a solitary joint component. Recreations have been performed with cases that remember flexible and plastic investigations for steel structures. The proposed component is fit for tackling all the cases considered with precision and mathematical effectiveness.

References

1. Prof. Swapnil B Cholekar, Basavalingappa SM. "Comparative Analysis of Multistoried RCC and Composite Building due to Mass Irregularity", International Research Journal of Engineering and Technology, (IRJET) e-ISSN: 2395 -0056. 2015; 02(04):603-608.
2. Mr. Nitish A. Mohite, Mr. P.K. Joshi, Dr. W. N. Deulkar, "Comparative Analysis of RCC and Steel Concrete composite (B+G+11 storey) Building", International Journal of Scientific and Research Publications, ISSN 2250-3153. 2015; 5(10):1-6.
3. Shashikala Koppad, Dr. S.V. Itti. "Comparative study of RCC and composite multistoreyed Buildings", International Journal of Engineering and Innovative Technology (IJEIT), ISSN: 2277-3754. 2013; 3(5):341-345.
4. Sattainathan A, Nagarajan N. "Comparative study on the behavior of R.C.C., Steel and composite structure", International Journal on Applications in Civil and Environmental Engineering, ISSN (Online): 2395 – 3837. 2015; 1(3):21-26.
5. Anderson D, Aribert JM, Bode H, Kronenburger HJ. 'Design rotation capacity of composite joints', The Structural Engineering. 2000; 78(6):25-29.
6. Federal Emergency Management Agency (FEMA). State of the Art Report, FEMA 355C, SAC Joint Venture, Washington, D.C, 2000, 6.
7. Mazzoni S, McKenna F, Fenves GL. OPENSEES Command Language Manual, CEE, University of California, Berkeley, 2016.
8. Prasad Kolhe, Prof. Rakesh Shinde. "Time History Analysis of Steel and Composite Frame Structure", IJREAT International Journal of Research in Engineering & Advanced Technology, ISSN: 2320 – 8791, 2015, 3(2).
9. Ketan Patel, Sonal Thakkar. "Analysis of CFT, RCC and Steel Building Subjected to Lateral Loading", Chemical, Civil and Mechanical Engineering Tracks of the 3rd Nirma University International conference on engineering, Elsevier, 2013, 259-265.